



SUN2SOLAR®

# SOLAR COVER ATTACHMENT KIT

This universal attachment kit easily attaches your new solar cover to your solar reel system.

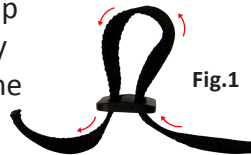
**NOTE:** Please read directions before assembling. This will save you time and make the attachment process much faster.

## 1 Attaching Cover Clips & Straps to Your Cover

Start cover clips 2" in from each end of cover, then evenly space remainder across edge of cover.

With spiked end away from you, measure in from edge of cover approximately 1 1/2" - 1 3/4 in, fold cover clip so that it punctures through cover and firmly press until spike snaps into place. (NOTE: It may be necessary to pop cover bubbles to attach clips.)

Slide the buckle approximately a quarter of the way up the strap (buckle on strap is attached by threading the strap up from the bottom and down through the other side. See figure 1)



## 2 Attaching Straps To Cover Clips

Thread strap from bottom side of cover clip and back to buckle (up from bottom side of buckle over and back down through buckle). As shown in Step 2.

## 3 Attaching Straps To Your Reel

Attach the straps to the reel using the hook and loop. (NOTE: Please make sure to wipe pole with alcohol where you are placing the hook and loop.) (See figure 2 & 3)

Make sure strap lengths are equal by adjusting the strap and buckle overlap.

Test rolling up your cover and if uneven readjust straps.

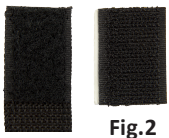
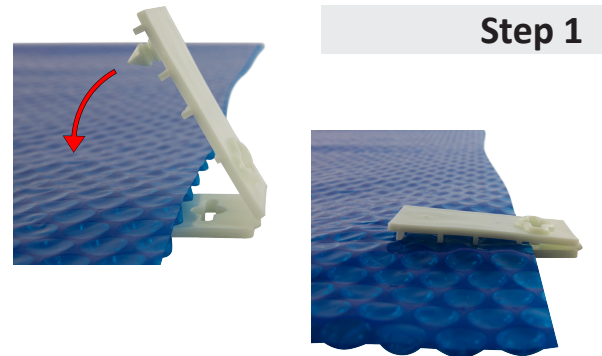


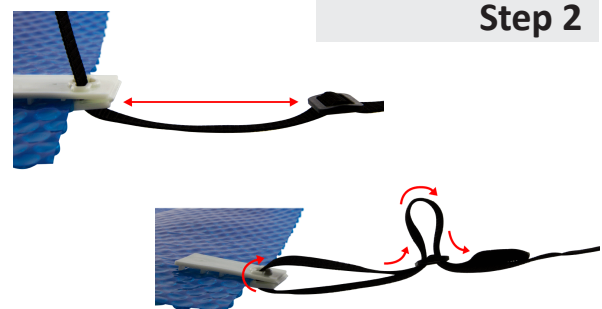
Fig.2



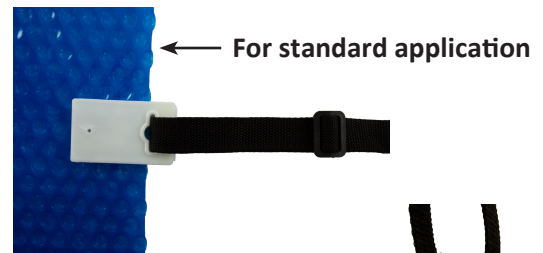
Fig.3



Step 1



Step 2



**For offset applications:** → Including, oval or irregular shaped pools where you need to pinch pleat.

