

SaltDip™

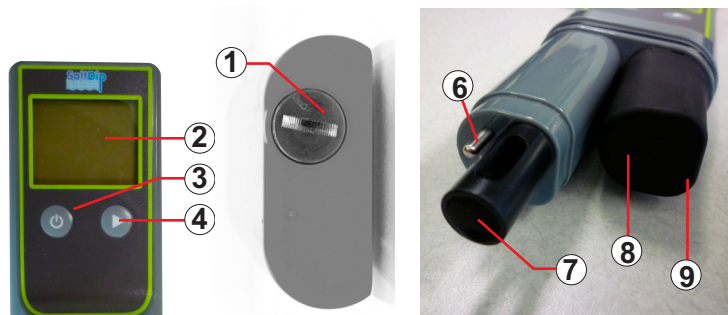
Digital Salinity Reader

OPERATING INSTRUCTIONS

Introduction

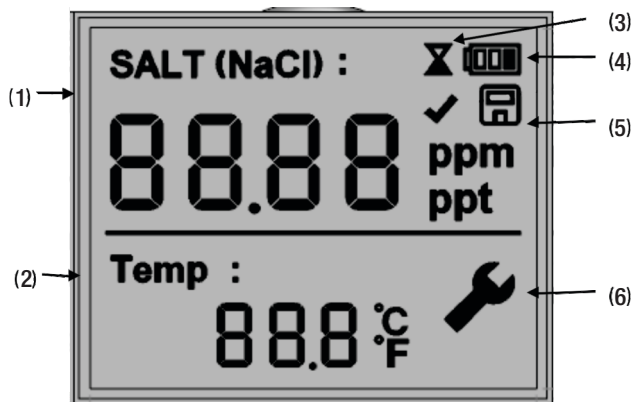
SaltDip is a pool and spa water salinity measurement tool. It is an easy to use, accurate and economical way to determine your water's salt level in just seconds!

Meter Description



Front Panel Description

1. Battery Compartment Cap
2. LCD Display
3. Power Button – Turns unit On/Off
4. Start Button – Start a new measurement
5. Sample Cup – To collect samples in and store your meter when not in use
6. Temperature Probe
7. Conductivity Electrode Probe
8. Sleeve holder – Place probe sleeve here when conducting tests
9. Probe Sleeve with moist sponge included.



- SALTDIP™ Display
1. Salt (NaCl) Level in PPM
 2. Temperature Display in C°/F°
 3. Hourglass: measurement in progress

4. Battery indicator
5. Disk Icon: Last saved measurement
6. Wrench Icon: Error- Salt or Temperature out of range.

Specifications / Features

- Operation Ranges: Temperature 5°-50°C / 41°-122° F, Salt 200-9800ppm (NaCl)
- Temperature sensor: Selectable °C/°F. Resolution 0.1 °C/°F (1°F if >= 100°F)
- Salt Resolution: +/- 10%
- Internal memory saves last reading
- Gray Background with Bold black characters and LED backlight for easy viewing.
- Auto shutdown after 1 min idle.

Getting Started

Inserting Batteries (2x AAA Not Included)

1. Remove battery cap by twisting counter clockwise with a coin or flathead screwdriver.
2. Insert 2x AAA Batteries (Not included) in the direction pictured on the back of meter.
3. Replace cap and secure tightly.

Taking Measurements

1. Detach the cup from the meter and fill it to the WATER LEVEL line with your sample. Collect sample 6" from surface for most accurate results.
2. Remove the protective sleeve from the probe and attach it to the holder.
3. Submerge probes in to your collected sample and reattach the cup to the meter.

IMPORTANT: SaltDip must be kept standing vertically when conducting tests.

Meter is not water resistant, only probe electrodes are to get wet.

4. Press the to turn the unit ON – Last recorded reading will display with icon
5. Press to begin a new measurement, will flash until reading is stabilized.
6. Once complete, meter will beep and new SALT and Temperature reading will be displayed.
7. Results will be saved until a new test is done or the batteries are removed.
8. Remove probes and rinse with fresh water, discard sample and rinse cup out to avoid future test contamination.
9. Return probe sleeve and reconnect cup to meter.

Basic Operation

• Power On/Off

Press the Button to turn the unit On and Off. Auto shutdown after 1 minute idle time.

• Toggle Temperature C°/F°

To change the displayed temperature, with the unit ON press and hold for 4 seconds.

Maintenance

SaltDip Care and Storage

- Unit must be kept standing vertically when there is water in the sample cup. Never submerge the SaltDip in water, only probes are waterproof.
- Rinse the probe with distilled or tap water after each use to avoid cross contamination.
- Keep probe protected with sleeve and sample cup when not in use, make sure sponge inside sleeve is kept moist.
- Store meter in a cool, dry area. Avoid extreme temperatures and conditions.

Cleaning the unit

- NEVER use any cleaning solution or chemicals to clean the probe. Doing so may cause degradation in performance.
- Use water and soft cloth to wipe the unit clean. Never submerge unit in water.
- Rinse out sample cup, wash away any residue to prevent cross contamination.

Troubleshooting

PROBLEM	POSSIBLE CAUSE	SOLUTION
Meter will not turn on	Batteries are low/dead	Change batteries
	Batteries are facing wrong direction	See image on back of unit for correct polarity

Icon	Description	Range	Actions
	Salt out of range	200 ~ 9800ppm	Bring sample within range
	Temperature out of range	5 ~ 50°C (41 ~ 122°F)	Bring sample within range
	Batteries are low	N/A	Change batteries

Warranty

The SaltDip is guaranteed to be free from defects in material and workmanship for a period of 90 days from the date of original purchase. Damages brought on by operator negligence, abuse, accident, misapplication, mishandling or acts of God will void this warranty. This warranty is limited to the repair or replacement of the product at the discretion of the manufacturer and does not include shipping costs. This product cannot be returned without a Return Merchandise Authorization number from Solaxx. For warranty support or a RMA number, go to www.solaxx.com and click on CONTACT or email:

support@solaxx.com